



yewtwist

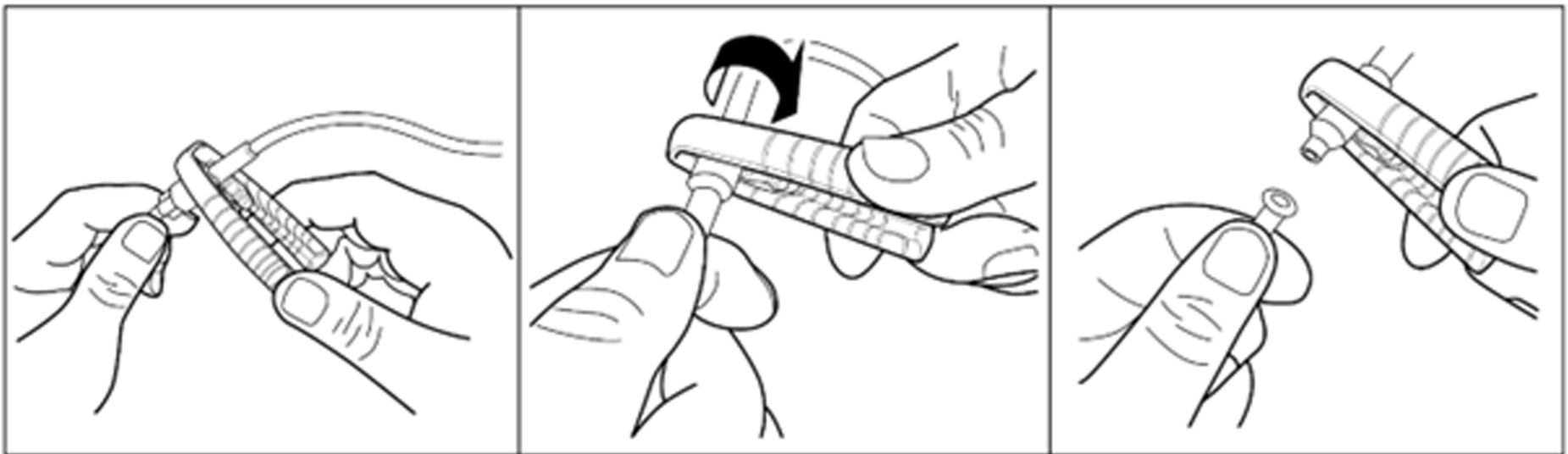
A better way to manage IV connections

Prevent IV damage with a simple twist

Grip

Twist

Detach



Select jaw size that best fits your IV or ENFit connection and attach.

Squeeze arms of Yewtwist and turn counterclockwise to loosen connection.

Disconnect.

Intended Use

Yewtwist is intended to be used to assist a user with the disconnection of luer lock fittings, including fittings used for medical purposes, by providing additional grip and leverage to improve the user's ability to manipulate and disconnect a tight or stuck fitting.

Recommended **single patient use** but can be used multiple times for that patient.

Yewtwist is packaged in resealable bag with space on the back to place patient's name, date and use for (ie. IV line, catheter connectors, extension sets, IV bags, stopcocks, blood/blood product IV tubing or ENFit line etc.)

Yewtwist is presently in use in **ICUs, dialysis, oncology, gastroenterology, transplant units, community care** and **vascular access**. We continue to learn of the additional expanding

Yewtwist can go with patient when he/she is transferred to another floor, and if discharged home with an IV or ENFit line, can bring home.

Cleaning Yewtwist: Clean with hospital grade wipes between uses.



NOT MADE WITH
NATURAL RUBBER
LATEX



SINGLE PERSON USE



THIS PRODUCT HAS
NOT BEEN STERILIZED



NIPRO CANADA

199 Saint David Street, Lindsay, Ontario, Canada
Toll-Free: 800-387-9757 | Local: 705-328-2518
www.nipro.com | info@nipromed.com