



yewtwist

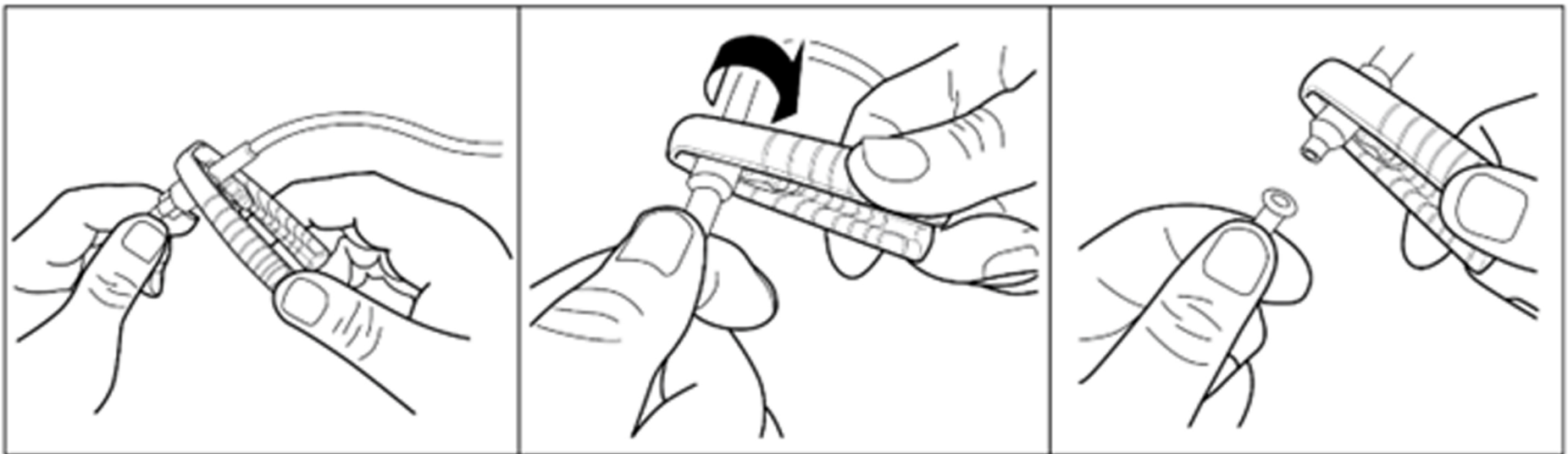
A better way to manage IV connections

## Prevent IV damage with a simple twist

Grip

Twist

Detach



Select jaw size that best fits your IV or ENFit connection and attach.

Squeeze arms of Yewtwist and turn counterclockwise to loosen connection.

Disconnect.

### Intended Use

Yewtwist is intended to be used to assist a user with the disconnection of luer lock fittings, including fittings used for medical purposes, by providing additional grip and leverage to improve the user's ability to manipulate and disconnect a tight or stuck fitting.

Recommended **single patient use** but can be used multiple times for that patient.

Yewtwist is packaged in resealable bag with space on the back to place patient's name, date and use for (ie. IV line, catheter connectors, extension sets, IV bags, stopcocks, blood/blood product IV tubing or ENFit line etc.)

Yewtwist is presently in use in **ICUs, dialysis, oncology, gastroenterology, transplant units, community care** and **vascular access**. We continue to learn of the additional expanding areas of use due to Yewtwist's versatility.

Yewtwist can go with patient when he/she is transferred to another floor, and if discharged home with an IV or ENFit line, can bring home.

Cleaning Yewtwist: Clean with hospital grade wipes between uses.



**NOT MADE WITH  
NATURAL RUBBER  
LATEX**



**SINGLE PERSON USE**



**THIS PRODUCT HAS  
NOT BEEN STERILIZED**



**NIPRO CANADA**

199 Saint David Street, Lindsay, Ontario, Canada  
Toll-Free: 800-387-9757 | Local: 705-328-2518  
www.nipro.com | info@nipromed.com